

# Acuity<sub>VDR</sub>

Advanced Veterinary Imaging



Acuity<sub>VDR</sub>



Radmedix

# Acuity<sub>VDR</sub>



## HIGH TECH

The Acuity X-ray is fully digital software integrated to allow x-ray parameters to be entered directly from the AccuVet software.

---

## BETTER WORKFLOW

Auto-advancing exams allow the caregiver to remain by the patient's side throughout. All the user has to do is press their foot on the exposure button.

---

## THOUGHTFUL FEATURES

The Acuity VDR system offers a 21", full operational control heads-up display, allowing the user to never leave the patients side while perfecting image workflow.

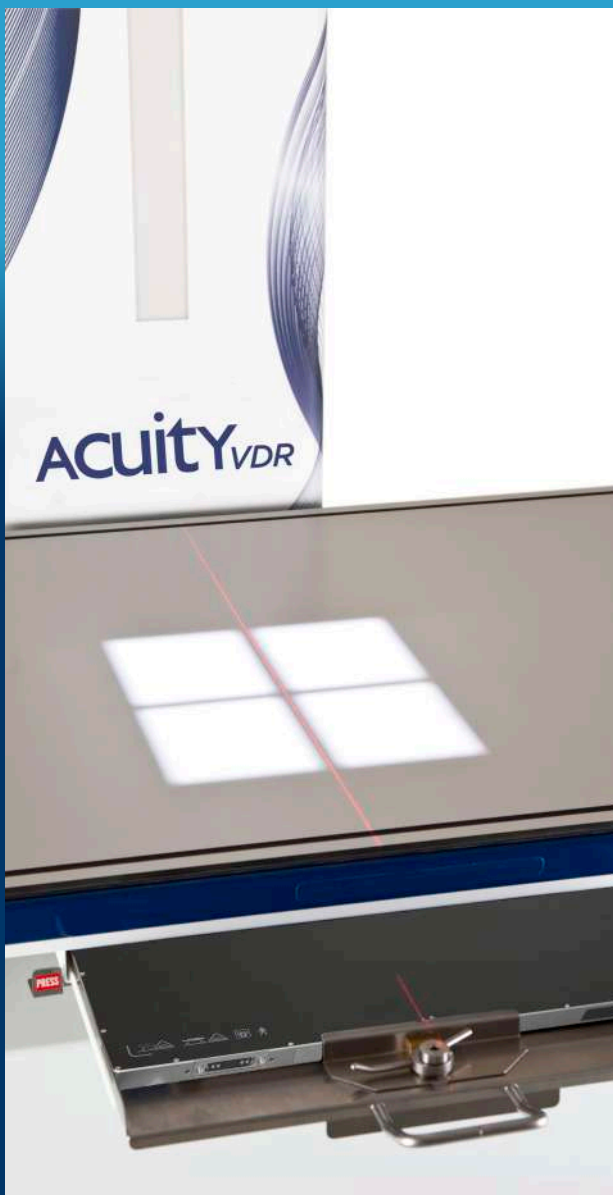
## CONTACT INFO

844-723-6334

RADMEDIX.COM

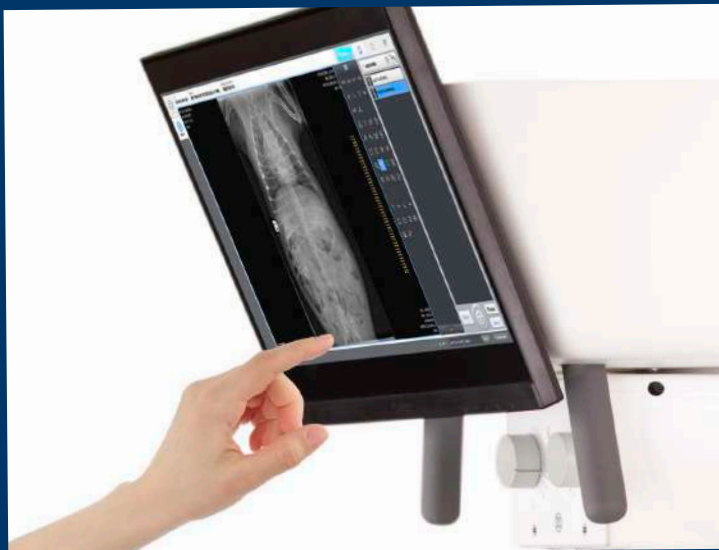
# 6-WAY SYSTEM MOVEMENT

- Tube column tracks left to right
- Tube head rotates 180 degrees
- LED Collimator rotates
- Table floats 4-way
- Ideal for optimal imaging in small spaces and oblique shots without positioning foam



# EVERYTHING YOU NEED AT YOUR FINGERTIPS

- Fully integrated software for generator control
- 21" mounted heads-up touchscreen display in addition to the included wall mounted PC - controls are synonymous on both
- Conversion from analogue to digital RadmediX solution required only addition of HD monitor & cables - included with Acuity DR Panel



# KEY SPECIFICATIONS

- Operator console in tilt-out table door with digital readout
- APR - Anatomical Program Radiography
- Full digital software integration from heads-up touchscreen display
- Exposure footswitch
- 4-way float table, 67 in. x 32 in.
- 6-way system movement
- Laser lined collimator with LED light field
- Variable 40 in. SID to film plane and table top
- 30 kW high frequency (HF) technology generator
- 300 lb weight load
- Patient tie-downs
- Urine trough to prevent fluid runoff
- Parts warranty: System - 62 months
- X-ray tube: 62 months prorated



# Acuity<sub>VDR</sub>